

Outbreak Brief #45: Coronavirus Disease 2019 (COVID-19) Pandemic

Date of Issue: 24 November 2020

58,436,142 cases and 1,385,469 deaths

Data sources: World Health Organization and African Union Member States

Outbreak Update: Since the last brief (17 November 2020), 4,123,778 new confirmed¹ coronavirus disease 2019 (COVID-19) cases and 68,185 new deaths have been reported globally. To date, a total of 58,436,142 COVID-19 cases and 1,385,469 related deaths (case fatality rate (CFR): 2.4%) have been reported from 221 countries and territories. This week, no new country or territory reported its first case. The distribution of cumulative cases (proportion of global cases) from the World Health Organization (WHO) reporting regions (excluding Africa) are as follows: Eastern Mediterranean Region 3,201,382 (5%), European Region 17,063,635 (29%), Region of the Americas 24,815,423 (42%), South-East Asia Region 10,421,539 (18%) and Western Pacific Region 840,703 (1%). Among the affected locations, over the last seven days, the United States has reported more than one million new cases, while Brazil, India and Italy have reported over 200,000 new cases each. For more detailed information on cases and deaths being reported outside of Africa, refer to the WHO daily situation reports.²

As of 9 am East African Time (EAT) 24 November 2020, a total of 2,080,923 COVID-19 cases and 49,975 deaths (CFR: 2.4%) have been reported in 55 African Union (AU) Member States. This is 4% of all cases reported globally. The majority (75%) of Member States continue to report community transmission. Of the countries actively reporting COVID-19 epidemiologic data, seventeen countries are reporting case fatality rates higher than the global case fatality rate of 2.4%, these include Sudan (7.3%), Sahrawi Arab Democratic Republic (7.1%), Chad (6.1%), Egypt (5.8%), Liberia (5.3%), Niger (5.1%), Mali (3.4%), Gambia (3.3%), Tunisia (3.2%), Sierra Leone (3.1%), Malawi (3.1%), Algeria (3%), Zimbabwe (2.9%), Democratic Republic of Congo (2.7%), South Africa (2.7%), Burkina Faso (2.5%) and Somalia (2.5%).

For Epi week 47 (16 - 22 November), 93,944 new COVID-19 cases have been reported, which is a 1% increase in the number of new cases reported compared to Epi week 46. The majority of new COVID-19 cases being reported for this week are from the Northern region (57%) followed by the Southern (22%), Eastern (15%), Western (4%) and Central (2%) regions. Countries reporting the highest incidence (COVID-19 new cases per 100,000 population) this week include Morocco (87), Cabo Verde (76), Tunisia (70), Libya (62), Botswana (52) and South Africa (29).

¹ WHO COVID-19 surveillance guidance and case definition: <https://www.who.int/publications/i/item/who-2019-nCoV-surveillanceguidance-2020.7>

² WHO coronavirus disease (COVID-19) dashboard: <https://covid19.who.int/>

Table 1 highlights the reported cases and deaths from COVID-19 in all countries in Africa for Epi week 47. In addition, the table reports the current phase of the epidemic for each country. Figure 1 shows the trend of new COVID-19 cases reported by day and region from 15 February to date. The increase in new cases noted in October has sustained through November. For this week, six countries account for about 80% of the new COVID-19 cases reported: Morocco (34%), South Africa (18%), Tunisia (9%), Kenya (8%), Algeria (8%) and Libya (3%).

Table 1. Confirmed COVID-19 cases, deaths and recoveries³ reported in Africa for Epi week 47 (16 November - 22 November 2020)

Country	Number of cases (new)	Percent change in new cases since Epi week 47	Number of deaths (new)	Percent change in new deaths since Epi week 47	Epidemic phase ⁴
Central Region	63,906 (1,581)	98%	1,182 (12)	20%	
Burundi	662 (34)	143%	1 (0)	NA*	2
Cameroon	23,528 (836)	208%	435 (2)	NA*	3
Central African Republic	4,911 (11)	-48%	63 (0)	-100%	3
Chad	1,648 (45)	-13%	101 (0)	-100%	3
Congo	5,632 (117)	-14%	92 (0)	NA*	3
Democratic Republic of Congo	12,278 (439)	90%	329 (8)	300%	3
Equatorial Guinea	5,137 (16)	-45%	85 (0)	-100%	3
Gabon	9,131 (69)	73%	59 (1)	-67%	3
Sao Tome and Principe	979 (14)	367%	17 (1)	NA*	2
Eastern Region	256,201	3%	4,971 (253)	-12%	

³ Data is continuously verified for accuracy and reliability however it may change based on retrospective updates from Member States.

⁴ Phases defined according to Africa CDC's Recommendations for a stepwise COVID-19 response - <https://africacdc.org/download/recommendations-for-stepwise-response-to-covid-19/>: **Phase 0 (No COVID-19 case)**: no reported case in-country; **Phase 1 (Early stage outbreak)**: one or more imported cases, limited local transmission related to imported cases; **Phase 2 (Expanding outbreak)**: increasing number of imported cases, increased local spread but all cases linked to known transmission chains, outbreak clusters with a known common exposure; **Phase 3 (Advancing outbreak)**: localized outbreaks start to merge, one or more cases or deaths occur outside known transmission, multiple generations in transmission chains, cases are detected among severe acute respiratory illness (SARI) case with no known exposure; **Phase 4 (Large outbreak with nationwide transmission)**: widespread sustained community transmission, multiple generation transmission chains can be identified but most cases occurring outside of chains, community-wide transmission throughout all or nearly all of the country.

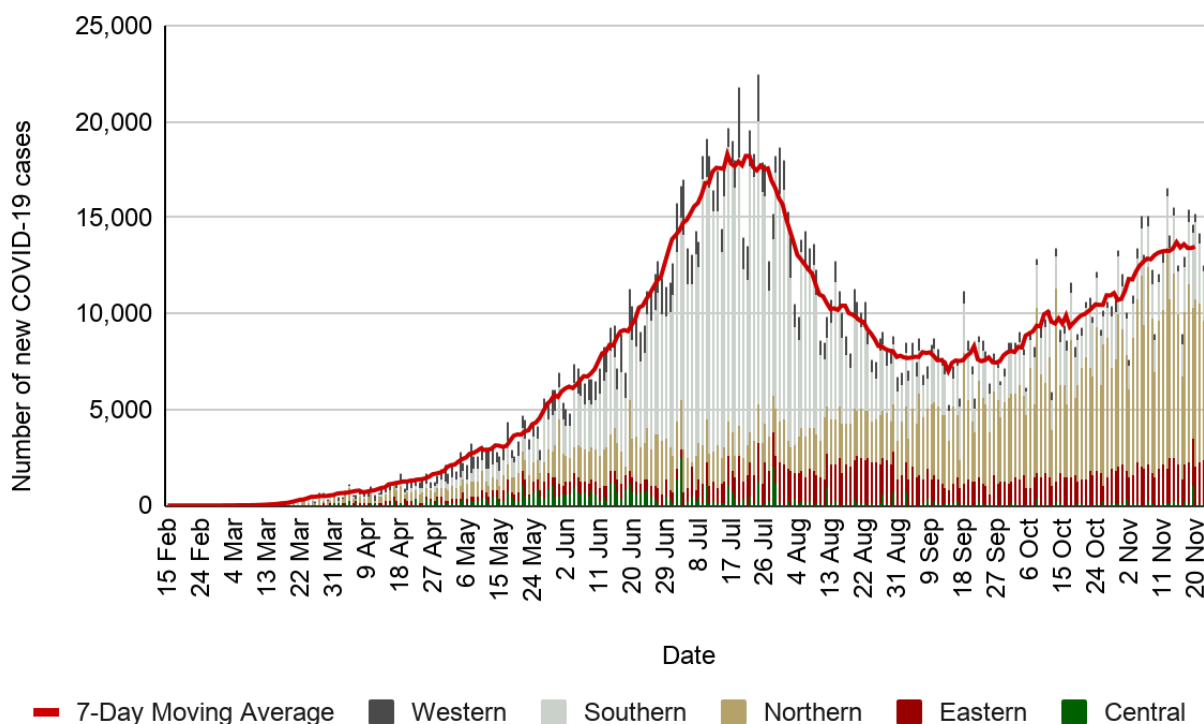
	(14,219)				
Comoros	596 (17)	6%	7 (0)	NA*	3
Djibouti	5,668 (19)	-54%	61 (0)	NA*	2
Eritrea	551 (58)	2800%	(0)	NA*	1
Ethiopia	105,785 (3,065)	1%	1,647 (78)	70%	3
Kenya	77,535 (7,290)	-6%	1,380 (111)	-30%	3
Madagascar	17,341 (31)	-64%	251 (1)	No change	3
Mauritius	494 (16)	-38%	10 (0)	NA*	1
Rwanda	5,665 (210)	-10%	47 (2)	-78%	2
Seychelles	166 (6)	200%	(0)	NA*	1
Somalia	4,445 (144)	100%	113 (6)	100%	1
South Sudan	3,047 (31)	-14%	60 (1)	NA*	3
Sudan	16,431 (1,384)	64%	1,202 (27)	-54%	3
Tanzania ⁵	509 (0)	NA*	21 (0)	NA*	3
Uganda	17,968 (1,948)	20%	172 (27)	108%	2
Northern Region	688,136 (53,803)	-8%	18,215 (1,278)	No change	
Algeria	74,862 (7,183)	28%	2,257 (89)	-33%	3
Egypt	113,027 (2,260)	44%	6,548 (95)	12%	2
Libya	78,437 (4,113)	-22%	1,102 (77)	-5%	3
Mauritania	8,130 (176)	19%	169 (4)	NA*	3
Morocco	324,941 (31,764)	-13%	5,316 (537)	6%	2
Tunisia	88,711 (8,307)	-11%	2,821 (476)	1%	3
Sahrawi Arab Democratic Republic	28 (0)	NA*	2 (0)	NA*	1
Southern Region	861,620 (20,911)	25%	22,513 (714)	50%	
Angola	14,493 (1,042)	2%	337 (15)	No change	3
Botswana	9,594 (1,369)	251%	31 (4)	NA*	3

⁵ Last report received 7-May-2020.

Eswatini	6,219 (124)	35%	120 (1)	-50%	3
Lesotho	2,086 (45)	-39%	44 (0)	NA*	2
Malawi	6,003 (38)	171%	185 (0)	-100%	3
Mozambique	15,037 (589)	-13%	124 (11)	-21%	3
Namibia	13,865 (357)	20%	144 (6)	50%	3
South Africa	767,679 (16,655)	21%	20,903 (662)	53%	3
Zambia	17,424 (301)	78%	357 (4)	No change	3
Zimbabwe	9,220 (391)	31%	268 (11)	175%	3
Western Region	201,681 (3,430)	4%	2,842 (18)	-45%	
Benin	2,916 (32)	-69%	43 (0)	NA*	3
Burkina Faso	2,735 (94)	31%	68 (0)	-100%	3
Cape Verde	10,276 (454)	0%	104 (1)	-67%	3
Côte d'Ivoire	21,138 (162)	13%	131 (3)	50%	3
Gambia	3,726 (24)	33%	123 (1)	No change	3
Ghana	50,941 (484)	-25%	323 (0)	-100%	3
Guinea	12,841 (217)	3%	75 (0)	-100%	3
Guinea-Bissau	2,421 (2)	-67%	43 (0)	-100%	3
Liberia	1,551 (39)	-35%	82 (0)	NA*	3
Mali	4,255 (355)	83%	145 (4)	No change	3
Niger	1,368 (61)	-5%	70 (0)	-100%	2
Nigeria	66,383 (1,235)	17%	1,167 (4)	-56%	3
Senegal	15,882 (89)	5%	330 (2)	No change	3
Sierra Leone	2,405 (14)	40%	74 (0)	NA*	3
Togo	2,843 (168)	6%	64 (3)	-25%	3
Total	2,071,544 (93,944)	1%	49,723 (2,275)	9%	

*No new cases/deaths reported in the previous week.

Figure 1: New COVID-19 cases reported by day and AU region, 15 February - 24 November 2020



NEW Africa CDC Response Activities:

General:

1. The African Development Bank (AfDB) awarded a grant of \$27.33 million to the Africa Centres for Disease Control (Africa CDC) to support the continental strategy on COVID-19. The grant agreement was signed by H.E. Amira Elfadil Mohammed, Commissioner for Social Affairs, African Union Commission and Mr. Abdul Kamara, Ethiopia Country Manager, African Development Bank during the Africa CDC weekly COVID-19 press briefing on Thursday, 19 November 2020 at 11 am EAT. The recording for this press brief session is available on the Africa CDC [Facebook page](#).
2. Africa CDC in collaboration with AU-IBAR and AU-PANVAC have issued an alert to AU Member States for H5N8.
 - We urge NPHIs and Ministries of Health to take a One Health approach in working with all relevant sectors to strengthening surveillance for H5N8

To see notification, please click below the link:

<https://africacdc.org/download/highly-pathogenic-avian-influenza-hpai-h5n8-notification/>

3. Africa CDC Public Health Emergency Operations Centres (PHEOCs) and COVID-19 Management will hold its weekly PHEOC webinar series on Multisectoral Coordination,

titled “Multisectoral Coordination Framework for Preparedness” on Thursday, 26 November 2020 at 3 pm EAT. Registration link: bit.ly/3jxGzv9

4. Africa CDC in collaboration with partners - the Africa regional tripartite members (FAO, OIE, WHO), UNEP and African Union Inter-African Bureau for Animal Resources (AU-IBAR) organized the 2nd continental joint World Antimicrobial Awareness Week (WAAW) campaign for Africa, on 18 - 24 November 2020 at 10 am daily. The link to register and join: https://zoom.us/webinar/register/WN_dTykKFkIR9-IKBoZtiFMw

Healthcare Preparedness and Medical Countermeasures:

Case Management

1. The Africa CDC Case Management Technical Working Group (TWG) held its 31st clinical webinar series titled “COVID-19 first wave in the Gambia” on Thursday, 19 November 2020 for over 200 participants. The recording can be accessed here: [CCOP | Africa CDC Institute](#)
2. The Africa CDC Case Management TWG held its fifth Mental Health Aspects of COVID-19 session titled “General principles of stress management” on Thursday, 19 November 2020 for over 100 participants. The recordings can be accessed here: [CCOP | Africa CDC Institute](#)
3. The Africa CDC Case Management TWG has facilitated the distribution of dexamethasone tablets to 32 Member States.

Infection Prevention and Control (IPC)

1. Africa CDC Infection Prevention and Control TWG conducted webinar training Series 1-4 (24 sessions) from April-November 2020, with a total of 11,884 participants in English and French completed. The next webinar series jointly organized by Africa CDC, ICAN, RSTL and WHO AFRO will commence in January 2021.

Laboratory:

1. Over 21 million tests for COVID-19 have been conducted to date with a positivity rate of 9.7% and test per case ratio of 10.2, which is an increase of 4.3% from last week.

Sciences, Standards and Regulations:

1. Access the weekly COVID-19 Scientific and Public Health Policy Update which is published every other week on Tuesdays at <https://africacdc.org/resources/> or at the WHO AFRO link: https://afrolib.afro.who.int/pmb/opac_css/doc_num.php?explnum_id=7728

Recommendations for the Member States:

1. All Member States should continue to enhance their surveillance⁶ to include COVID-19⁷ and severe acute respiratory infections (SARI)⁸. Examples of enhanced surveillance include:
 - a. Adding questions about travel, contact history, and testing for coronaviruses to existing influenza surveillance systems;
 - b. Notifying healthcare facilities to immediately inform local public health officials about persons who meet the case definition for COVID-19, SARI and/or have recent travel to a country with local transmission or history of contact with a case.
2. Member States should perform contact tracing of confirmed cases based on transmission type and country capacity.⁹
3. Member states should notify and routinely share with WHO and Africa CDC data regarding suspected or confirmed COVID-19 cases, deaths, recoveries, tests conducted and healthcare workers infected to continually inform these and other updates. Notify Africa CDC by emailing: AfricaCDCEBS@africa-union.org.
4. Member states should continue to provide guidance to the general public about seeking immediate medical care and informing healthcare providers about recent travel or contact history in anyone who develops symptoms of severe respiratory illness.

Resources for more information:

Africa CDC Resources

- Africa CDC COVID-19 updates: <https://africacdc.org/covid-19/>
- Multimedia: <https://africacdc.org/covid-19-multimedia/>
- Resources, policy guidelines, and infographics: <https://africacdc.org/covid-19/covid-19-resources/>

Other Resources

- European Centre for Disease Prevention and Control. <https://www.ecdc.europa.eu/en/novel-coronavirus-china>
- US Centers for Disease Control and Prevention. Coronavirus disease 2019 (COVID-19). <https://www.cdc.gov/coronavirus/novel-coronavirus-2019.html>
- WHO. Technical Guidance. <https://www.who.int/emergencies/diseases/novel-coronavirus-2019/technical-guidance>

⁶Africa CDC Protocol for enhanced surveillance for COVID-19 in Africa: <https://africacdc.org/download/protocol-for-enhanced-severe-acute-respiratory-illness-and-influenza-like-illness-surveillance-for-covid-19-in-africa/>

⁷WHO COVID-19 surveillance guidance and case definition: <https://www.who.int/publications/i/item/who-2019-nCoV-surveillanceguidance-2020.7>

⁸WHO SARI case definition: anyone with an acute respiratory infection with a history of fever (or measured fever of $\geq 38\text{ }^{\circ}\text{C}$) and cough with symptom onset within the last 10 days that requires hospitalization.

https://www.who.int/influenza/surveillance_monitoring/ili_sari_surveillance_case_definition/en/

⁹Africa CDC Guidance on Contact Tracing for COVID-19 Pandemic: <https://africacdc.org/download/guidance-on-contact-tracing-for-covid-19-pandemic/>