

## Outbreak Brief #37: Coronavirus Disease 2019 (COVID-19) Pandemic

Date of Issue: 29 September 2020

33,039,429 cases and 996,932 deaths

Data sources: World Health Organization and African Union Member States

**Outbreak Update:** Since the last brief (22 September 2020), 2,084,654 new confirmed<sup>1</sup> coronavirus disease 2019 (COVID-19) cases and 37,690 new deaths have been reported globally. To date, a total of 33,039,429 COVID-19 cases and 996,932 related deaths (case fatality rate (CFR): 3.0%) have been reported from 217 countries and territories. The distribution of cumulative cases (proportion of global cases) from the World Health Organization (WHO) reporting regions (excluding Africa) are as follows: Eastern Mediterranean Region 2,066,097 (6%), European Region 5,725,150 (17%), Region of the Americas 16,360,122 (50%), South-East Asia Region 6,810,494 (21%) and Western Pacific Region 605,317 (2%). For more detailed information on cases and deaths being reported outside of Africa, refer to the WHO daily situation reports.<sup>2</sup>

**As of 9 am East African Time (EAT) 29 September 2020,** a total of 1,465,023 COVID-19 cases and 35,750 deaths (CFR: 2.4%) have been reported in 55 African Union Member State Countries. This is 4% of all cases reported globally. Since the last brief, 52,713 new COVID-19 cases have been reported, which is no change from the number of new cases reported in the 22 September 2020 brief. The proportion of new COVID-19 cases reported by region is as follows: Northern region 53% (27,713 cases; 10% increase change from previous week), Southern region 26% (13,853; 8% decrease), Eastern region 14% (7,902; 8% decrease), Western region 6% (3,176; 11% decrease), and Central region 1% (708; 8% decrease).

Eight countries account for over 84% of the new COVID-19 cases reported since the last brief: Morocco (33%), South Africa (19%), Libya (7%), Ethiopia (8%), Tunisia (9%), Mozambique (3%), Uganda (3%) and Algeria (2%). Countries reporting the highest incidence (COVID-19 cases per 100,000 population) over the past seven days in Africa include: Libya (80), Cabo Verde (72), Morocco (37), Tunisia (33), Namibia (27), South Africa (20) and Eswatini (13). Of the countries actively reporting COVID-19 epidemiologic data, twelve countries are reporting case fatality rates higher than the global case fatality rate of 3.0%. These include: Chad (7.2%), Sahrawi Arab Democratic Republic (7.1%), Sudan (6.1%), Liberia (6.1%), Niger (5.8%), Egypt (5.7%), Mali (4.2%), Algeria (3.9%), Angola (3.7%), Sierra Leone (3.3%), Malawi (3.1%) and Gambia (3.1%).

<sup>1</sup> WHO COVID-19 surveillance guidance and case definition: <https://www.who.int/emergencies/diseases/novel-coronavirus-2019/technical-guidance/surveillance-and-case-definitions>

<sup>2</sup> WHO coronavirus disease (COVID-19) situation reports: <https://www.who.int/emergencies/diseases/novel-coronavirus-2019/situation-reports>

Table 1 highlights the reported cases and deaths from COVID-19 in all countries in Africa. In addition, the table reports the current phase of the epidemic for each country. Figure 1 shows the trend of new COVID-19 cases reported by day and region from 29 February to date.

**Table 1. Confirmed COVID-19 cases, deaths and recoveries reported in Africa<sup>3</sup> as of 29 September 2020, 9am East Africa Time**

Country	Number of cases (new)	Percent change in new cases since previous brief	Number of deaths (new)	Percent change in new deaths since previous brief	Epidemic phase <sup>4</sup>
<b>Central Region</b>	<b>57,694 (708)</b>	<b>-8%</b>	<b>1,078 (7)</b>	<b>-22%</b>	
Burundi	485 (11)	450%	1 (0)	NA*	2
Cameroon	20,838 (407)	-4%	418 (2)	100%	3
Central African Republic	4,806 (13)	-38%	62 (0)	NA*	3
Chad	1,185 (32)	-53%	85 (4)	NA*	3
Congo	5,089 (87)	18%	89 (0)	-100%	3
Democratic Republic of Congo	10,624 (105)	-19%	271 (0)	-100%	3
Equatorial Guinea	5,028 (26)	1200%	83 (0)	NA*	3
Gabon	8,728 (24)	-52%	54 (1)	NA*	3
Sao Tome and Principe	911 (3)	50%	15 (0)	NA*	2
<b>Eastern Region</b>	<b>168,240 (7,263)</b>	<b>-8%</b>	<b>3,295 (140)</b>	<b>3%</b>	

<sup>3</sup> New numbers reported since last weekly report (22 September 2020, 9am EAT)

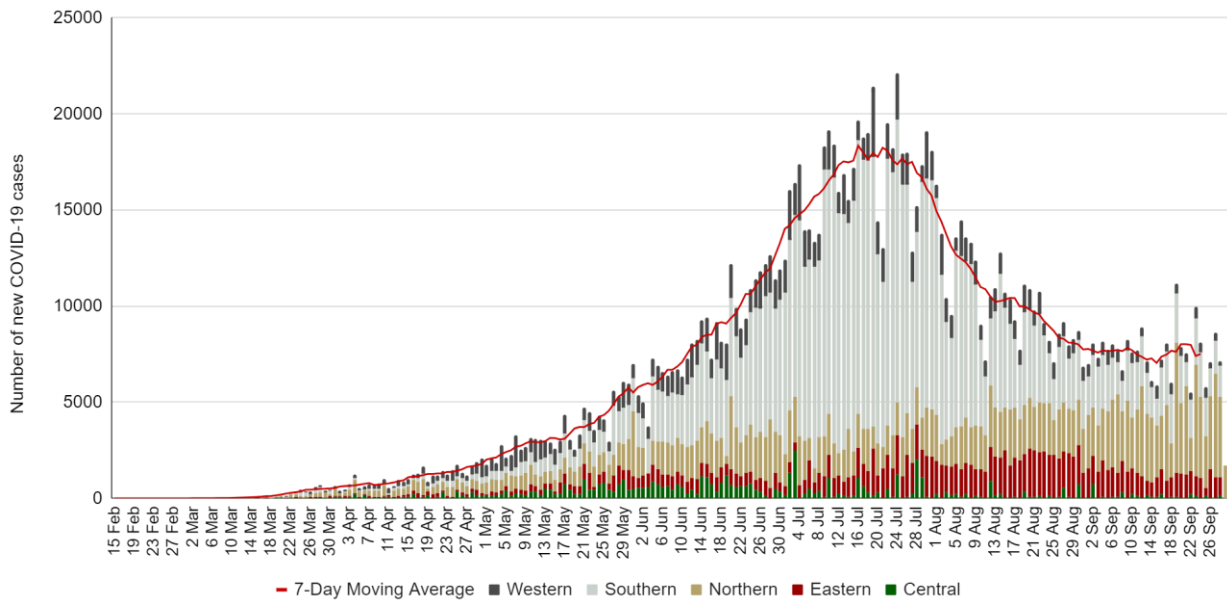
<sup>4</sup> Phases defined according to Africa CDC's Recommendations for a stepwise COVID-19 response - <https://africacdc.org/download/recommendations-for-stepwise-response-to-covid-19/>: **Phase 0 (No COVID-19 case)**: no reported case in-country; **Phase 1 (Early stage outbreak)**: one or more imported cases, limited local transmission related to imported cases; **Phase 2 (Expanding outbreak)**: increasing number of imported cases, increased local spread but all cases linked to known transmission chains, outbreak clusters with a known common exposure; **Phase 3 (Advancing outbreak)**: localized outbreaks start to merge, one or more cases or deaths occur outside known transmission, multiple generations in transmission chains, cases are detected among severe acute respiratory illness (SARI) case with no known exposure; **Phase 4 (Large outbreak with nationwide transmission)**: widespread sustained community transmission, multiple generation transmission chains can be identified but most cases occurring outside of chains, community-wide transmission throughout all or nearly all of the country

Country	Number of cases (new)	Percent change in new cases since previous brief	Number of deaths (new)	Percent change in new deaths since previous brief	Epidemic phase <sup>4</sup>
Comoros	478 (8)	-38%	7 (0)	NA*	3
Djibouti	5,410 (6)	-25%	61 (0)	NA*	2
Eritrea	375 (11)	267%	(0)	NA*	1
Ethiopia	73,944 (4,235)	-14%	1,177 (69)	-20%	3
Kenya	38,168 (1,089)	25%	700 (50)	92%	3
Madagascar	16,348 (275)	-10%	229 (4)	-67%	3
Mauritius	370 (3)	-50%	10 (0)	NA*	1
Rwanda	4,832 (110)	-8%	29 (2)	-60%	2
Seychelles	143 (0)	-100%	(0)	NA*	1
Somalia	3,588 (123)	62%	99 (1)	NA*	1
South Sudan	2,692 (43)	-31%	49 (0)	NA*	3
Sudan	13,606 (51)	155%	836 (0)	NA*	3
Tanzania	509 (0)	NA*	21 (0)	NA*	3
Uganda	7,777 (1,309)	-12%	77 (14)	100%	2
<b>Northern Region</b>	<b>329,088 (27,713)</b>	<b>10%</b>	<b>10,926 (849)</b>	<b>59%</b>	
Algeria	51,056 (1,030)	-33%	2,015 (336)	469%	3
Egypt	102,955 (814)	-16%	5,901 (114)	-10%	2
Libya	32,364 (3,568)	-32%	520 (66)	-23%	2
Mauritania	7,464 (80)	-10%	161 (0)	NA*	3
Morocco	119,107 (17,364)	28%	2,113 (283)	31%	2
Tunisia	16,114 (4,854)	25%	214 (50)	6%	2

Country	Number of cases (new)	Percent change in new cases since previous brief	Number of deaths (new)	Percent change in new deaths since previous brief	Epidemic phase <sup>4</sup>
Sahrawi Arab Democratic Republic	28 (3)	NA*	2 (0)	NA*	1
<b>Southern Region</b>	<b>734,231 (13,853)</b>	<b>-8%</b>	<b>17,838 (649)</b>	<b>18%</b>	
Angola	4,718 (601)	-11%	174 (20)	11%	2
Botswana	3,172 (605)	482%	16 (3)	50%	2
Eswatini	5,452 (170)	-4%	108 (4)	33%	3
Lesotho	1,565 (141)	45%	35 (2)	NA*	2
Malawi	5,770 (37)	3%	179 (0)	-100%	3
Mozambique	8,288 (1,376)	-4%	59 (15)	67%	3
Namibia	11,121 (595)	-16%	121 (8)	-20%	3
South Africa	671,669 (9,733)	-13%	16,586 (594)	20%	3
Zambia	14,660 (485)	7%	332 (1)	-91%	3
Zimbabwe	7,816 (110)	-37%	228 (2)	No change	3
<b>Western Region</b>	<b>175,770 (3,176)</b>	<b>-11%</b>	<b>2,613 (33)</b>	<b>-33%</b>	
Benin	2,340 (46)	70%	40 (0)	NA*	3
Burkina Faso	2,028 (132)	-26%	57 (1)	NA*	3
Cape Verde	5,817 (536)	21%	59 (7)	No change	2
Côte d'Ivoire	19,641 (314)	20%	120 (-9)	-200%	3
Gambia	3,569 (43)	-64%	111 (3)	-40%	3
Ghana	46,482 (420)	-9%	301 (4)	33%	3
Guinea	10,598 (254)	-22%	66 (1)	-50%	3
Guinea-Bissau	2,324 (21)	-25%	39 (0)	NA*	3
Liberia	1,342 (6)	-60%	82 (0)	NA*	3

Country	Number of cases (new)	Percent change in new cases since previous brief	Number of deaths (new)	Percent change in new deaths since previous brief	Epidemic phase <sup>4</sup>
Mali	3,090 (66)	-26%	130 (2)	NA*	3
Niger	1,196 (7)	-22%	69 (0)	NA*	2
Nigeria	58,460 (1,023)	-2%	1,111 (11)	-35%	3
Senegal	14,919 (181)	-58%	309 (7)	40%	3
Sierra Leone	2,215 (47)	-20%	72 (0)	NA*	3
Togo	1,749 (80)	-12%	47 (6)	500%	3
<b>Total</b>	<b>1,465,023 (52,713)</b>	<b>0%</b>	<b>35,750 (1,678)</b>	<b>31%</b>	

\*No new cases/deaths reported in the previous week.



**Figure 1: New COVID-19 cases reported by day and AU region, 15 February - 29 September 2020**  
We observed the sharp down trending of the cases in Africa during the month of July and August mostly influenced by South Africa. However, in September the curve remained steady and flat.

**NEW Africa CDC Response Activities:**

**General:**

1. Africa CDC held its regular weekly press briefing on the COVID-19 pandemic on Thursday, 24 September 2020 at 11am EAT. The speaker for the week was H.E. Amira Elfadil Mohammed, Commissioner for Social Affairs, African Union Commission and Dr. John Nkengasong, Director of Africa CDC and Prof. The recording for this press brief session is available on the Africa CDC Facebook page. Link: <https://web.facebook.com/watch/?v=757691255074767&extid=gyiQO5GcQdC8XNaY>
2. Africa CDC One Health and COVID-19 held a webinar series on Monday 28 September 2020 from 4 - 5.30pm EAT. Experts will speak on “The sustained ecological & conservation-related effects of COVID-19 & how to prevent the next pandemic”. Register <https://bit.ly/369wYI7>

**Healthcare Preparedness and Medical Countermeasures:**

*Case Management*

1. Africa CDC Case Management TWG held the 23rd clinical webinar titled “COVID-19 and Multi-system inflammatory syndrome and congenital heart defects in children” on Thursday 24 September, 2020. There were 200 participants on the webinar and 200+ on Institute for Workforce Development(IWD) Facebook page. The recording can be accessed here: <https://www.africacdc.training/courses/ccop>

*Infection and Prevention Control (IPC)*

1. This week, Africa CDC IPC TWG will hold a webinar titled “Safe surgery during COVID-19 and maternal health” on Wednesday 30 September, 2020 , 1 pm EAT for the English session (Registration available at [https://zoom.us/webinar/register/WN\\_IIC9yfl9QDSyFQmvo61tOw](https://zoom.us/webinar/register/WN_IIC9yfl9QDSyFQmvo61tOw) and Friday 2 October 2020, 2pm EAT for the French session. Registration available at [https://zoom.us/webinar/register/WN\\_efU30YZxRcOqKaxwclltYw](https://zoom.us/webinar/register/WN_efU30YZxRcOqKaxwclltYw)

**Laboratory:**

1. Over 14 million tests for COVID-19 have been conducted to date, with a positivity rate of 10% and test per case ratio of 9.8 and 4.9% increase from last week.

**Risk Communication:**

1. Africa CDC TWG held the monthly meeting of the Public Health Risk Communication and Community Engagement Community of Practice (RCCE) for Africa on 24 September, 2020 at 3pm EAT. Over 75 representatives of the Member States and partners attended.

### Surveillance

1. The Africa CDC Surveillance TWG will hold a webinar titled “Demo and training on Africa Digital Platform on Safe Public Health Corridor for Travel”, on Wednesday 30 September 2020 at 4pm EAT for both the English and French sessions. Link: <https://zoom.us/j/92100725316?pwd=OFRIQ2hLdzExOHllWHh3MHFkYWJSQT09>

### Sciences, standards and regulations:

1. Access the weekly COVID-19 Scientific and Public Health Policy Update which is published every other week on Tuesdays at: <https://africacdc.org/resources/> or at the WHO AFRO link: [https://afrolib.afro.who.int/pmb/opac\\_css/doc\\_num.php?explnum\\_id=7728](https://afrolib.afro.who.int/pmb/opac_css/doc_num.php?explnum_id=7728)

### Recommendations for Member States:

1. All Member States should continue to enhance their surveillance<sup>5</sup> to include COVID-19<sup>6</sup> and severe acute respiratory infections (SARI)<sup>7</sup>. Examples of enhanced surveillance include:
  - a. Adding questions about travel, contact history, and testing for coronaviruses to existing influenza surveillance systems;
  - b. Notifying healthcare facilities to immediately inform local public health officials about persons who meet the case definition for COVID-19, SARI and/or have recent travel to a country with local transmission or history of contact with a case.

---

<sup>5</sup>Africa CDC Protocol for enhanced surveillance for COVID-19 in Africa: <https://africacdc.org/download/protocol-for-enhanced-severe-acute-respiratory-illness-and-influenza-like-illness-surveillance-for-covid-19-in-africa/>

<sup>6</sup>WHO COVID-19 surveillance guidance and case definition: <https://www.who.int/emergencies/diseases/novel-coronavirus-2019/technical-guidance/surveillance-and-case-definitions>

<sup>7</sup>WHO SARI case definition: anyone with an acute respiratory infection with a history of fever (or measured fever of  $\geq 38^{\circ}\text{C}$ ) and cough with symptom onset within the last 10 days that requires hospitalization. [https://www.who.int/influenza/surveillance\\_monitoring/ili\\_sari\\_surveillance\\_case\\_definition/en/](https://www.who.int/influenza/surveillance_monitoring/ili_sari_surveillance_case_definition/en/)

2. Member States should perform contact tracing of confirmed cases based on transmission type and country capacity.<sup>8</sup>
3. Member states should notify and routinely share with WHO and Africa CDC data regarding suspected or confirmed COVID-19 cases, deaths, recoveries, tests conducted and healthcare workers infected to continually inform these and other updates. Notify Africa CDC by emailing: [AfricaCDCEBS@africa-union.org](mailto:AfricaCDCEBS@africa-union.org).
4. Member states should continue to provide guidance to the general public about seeking immediate medical care and informing healthcare providers about recent travel or contact history in anyone who develops symptoms of severe respiratory illness.

**Resources for more information:**

*Africa CDC Resources*

- Africa CDC COVID-19 updates: <https://africacdc.org/covid-19/>
- Multimedia: <https://africacdc.org/covid-19-multimedia/>
- Resources, policy guidelines, and infographics: <https://africacdc.org/covid-19/covid-19-resources/>

*Other Resources*

- European Centre for Disease Prevention and Control. <https://www.ecdc.europa.eu/en/novel-coronavirus-china>
- US Centers for Disease Control and Prevention. Coronavirus disease 2019 (COVID-19). <https://www.cdc.gov/coronavirus/novel-coronavirus-2019.html>
- WHO. Technical Guidance. <https://www.who.int/emergencies/diseases/novel-coronavirus-2019/technical-guidance>

---

<sup>8</sup>Africa CDC Guidance on Contact Tracing for COVID-19 Pandemic: <https://africacdc.org/download/guidance-on-contact-tracing-for-covid-19-pandemic/>