

## Outbreak Brief #31: Coronavirus Disease 2019 (COVID-19) Pandemic

Date of Issue: 18 August 2020

**21,312,003 cases and 762,257 deaths**

*Data sources: World Health Organization and African Union Member States*

**Outbreak Update:** Since the last brief (11 August 2020), 1,584,886 new confirmed<sup>1</sup> coronavirus disease 2019 (COVID-19) cases and 33,917 new deaths have been reported globally. To date, a total of 21,312,003 COVID-19 cases and 762,257 (case fatality rate (CFR): 4%) related deaths have been reported from 215 countries and territories. The distribution of cumulative cases (proportion of global cases) from the World Health Organization (WHO) reporting regions (excluding Africa) are as follows: Eastern Mediterranean Region 1,556,033 (7%), European Region 3,754,649 (18%), Region of the Americas 11,420,787 (54%), South-East Asia Region 3,040,165 (14%) and Western Pacific Region 410,328 (2%). For more detailed information on cases and deaths being reported outside of Africa, refer to the WHO daily situation reports<sup>2</sup>.

**As of 9am East African Time (EAT) 18 August 2020,** a total of 1,128,245 COVID-19 cases and 25,884 deaths (CFR: 2%) have been reported in 55 African countries. This is 5% of all cases reported globally. Since the last brief, 72,281 new COVID-19 cases have been reported, which is an increase of 7% compared to the 11 August 2020 report. The proportion of new COVID-19 cases reported by region is as follows: Southern region 56% (31,922), Northern region 17% (16,323), Eastern region 9% (13,045), Western region 13% (7,457), and Central region 5% (1,423).

Six countries account for 80% of the new COVID-19 cases reported since the last brief: South Africa (53%), Egypt (9%), Morocco (4%), Kenya (3%), Ethiopia (3%), Algeria (4%), and Ghana (4%). South Africa (1,015), Djibouti (537), Cabo Verde (534), Sao Tome and Principe (443), and Gabon (394) are reporting the most cumulative COVID-19 cases per 100,000 in Africa. Twelve countries are reporting case fatality rates comparable to or higher than the global case fatality rate of 4%. These are: Sahrawi Arab Democratic Republic (11%), Chad (8%), Sudan (7%), Liberia (6%), Niger (6%), Egypt (5%), Mali (5%), Angola (5%), Algeria (4%), Burkina Faso (4%), Sierra Leone (4%) and Tanzania (4%).

Table 1 highlights the reported cases, deaths, and recoveries from COVID-19 in all countries in Africa. In addition, the table reports the current phase of the epidemic for each country. Africa

<sup>1</sup> WHO COVID-19 surveillance guidance and case definition: <https://www.who.int/emergencies/diseases/novel-coronavirus-2019/technical-guidance/surveillance-and-case-definitions>

<sup>2</sup> WHO coronavirus disease (COVID-19) situation reports: <https://www.who.int/emergencies/diseases/novel-coronavirus-2019/situation-reports>

CDC is working with all affected countries and is mobilizing laboratory, surveillance, and other response support where requested.

**Table 1. Confirmed COVID-19 cases, deaths and recoveries reported in Africa<sup>3</sup> as of 18 August 2020, 9am East Africa Time**

Country	No. of cases (new)	No. of deaths (new)	No. of recovered	Epidemic phase <sup>4</sup>
<b>Central Region</b>	<b>51,941 (1,423)</b>	<b>1009 (46)</b>	<b>39,148</b>	
Burundi	413 (5)	1 (0)	336	2
Cameroon	18,389 (803)	401 (8)	16,459	3
Central African Republic	4,667 (26)	61 (1)	1,748	3
Chad	959 (14)	76 (0)	865	3
Congo	3,831 (86)	76 (16)	1,628	3
DRC	9,706 (218)	243 (19)	8,705	3
Equatorial Guinea	4,821 (0)	83 (0)	2,182	3
Gabon	8,270 (264)	53 (2)	6,404	3
Sao Tome and Principe	885 (7)	15 (0)	821	2
<b>Eastern Region</b>	<b>104,878 (13,045)</b>	<b>2,260 (232)</b>	<b>61,636</b>	

<sup>3</sup> New numbers reported since last weekly report (11 August 2020, 9am EAT)

DRC - Democratic Republic of the Congo

<sup>4</sup> Phases defined according to Africa CDC's Recommendations for a stepwise COVID-19 response -

<https://africacdc.org/download/recommendations-for-stepwise-response-to-covid-19/>: **Phase 0 (No COVID-19 case)**: no reported case in-country; **Phase 1 (Early stage outbreak)**: one or more imported cases, limited local transmission related to imported cases; **Phase 2 (Expanding outbreak)**: increasing number of imported cases, increased local spread but all cases linked to known transmission chains, outbreak clusters with a known common exposure; **Phase 3 (Advancing outbreak)**: localized outbreaks start to merge, one or more cases or deaths occur outside known transmission, multiple generations in transmission chains, cases are detected among severe acute respiratory illness (SARI) case with no known exposure; **Phase 4 (Large outbreak with nationwide transmission)**: widespread sustained community transmission, multiple generation transmission chains can be identified but most cases occurring outside of chains, community-wide transmission throughout all or nearly all of the country

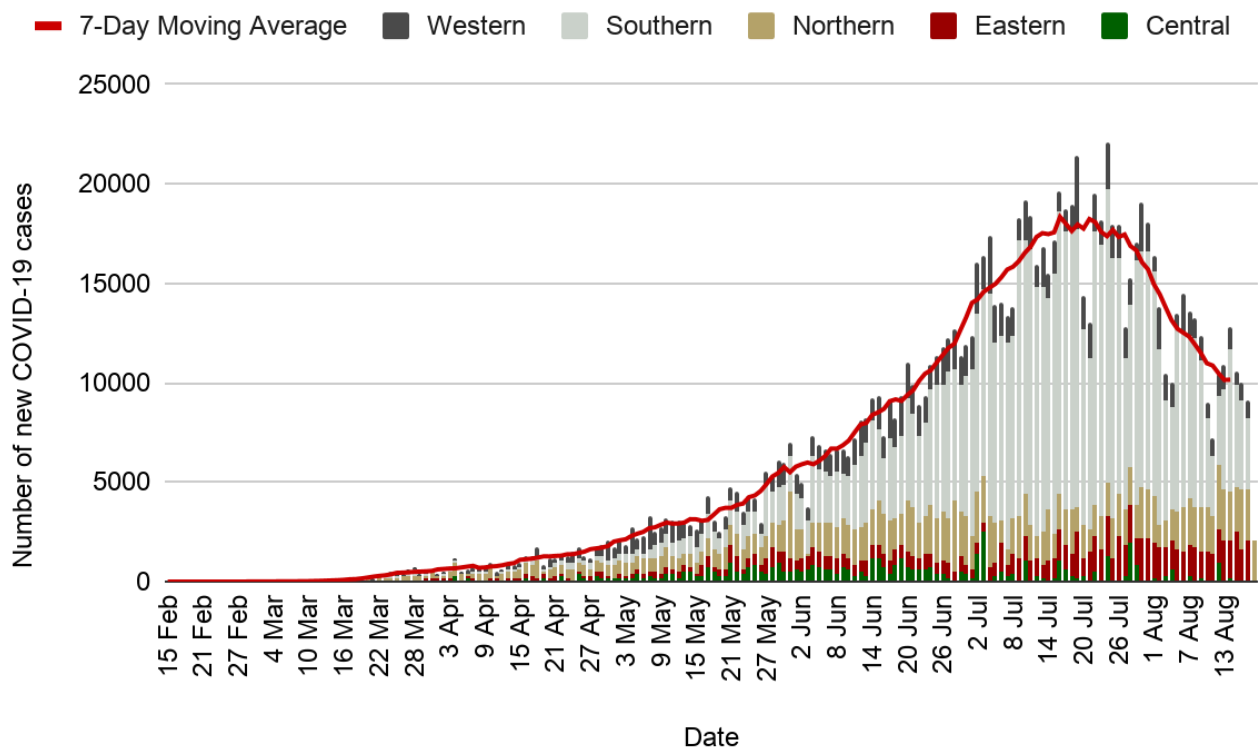
Comoros	399 (0)	7 (0)	379	3
Djibouti	5,372 (25)	59 (0)	5,211	2
Eritrea	285 (3)	0	248	1
Ethiopia	31,336 (7,745)	544 (124)	12,524	3
Kenya	30,365 (3,437)	482 (59)	17,160	3
Madagascar	13,886 (684)	171 (20)	12,603	3
Mauritius	344 (0)	10 (0)	332	1
Rwanda	2,540 (388)	8 (1)	1,661	2
Seychelles	127 (1)	0	126	1
Somalia	3,257 (30)	93 (0)	2,374	1
South Sudan	2,488 (18)	47 (0)	1,290	3
Sudan	12,410 (454)	803 (22)	6,385	3
Tanzania <sup>5</sup>	509 (0)	21 (0)	178	3
Uganda	1,560 (263)	15 (6)	1,165	2
<b>Northern Region</b>	<b>197,101 (18,434)</b>	<b>7,592 (412)</b>	<b>126,268</b>	
Algeria	39,469 (4,313)	1,366 (67)	27,347	3
Egypt	96,590 (924)	5,173 (138)	60,651	2
Libya	8,579 (3,038)	157 (37)	969	2
Mauritania	6,701 (191)	157 (0)	5,985	3
Morocco	43,558 (9,495)	681 (165)	29,941	2
Tunisia	2,185 (468)	56 (5)	1,362	1
Sahrawi Arab	19 (5)	2 (0)	13	1

<sup>5</sup> No updated data - last report received 7-May-2020.

Democratic Republic				
<b>Southern Region</b>	<b>621,935 (28,358)</b>	<b>12,637 (1,325)</b>	<b>492,479</b>	
Angola	1,935 (256)	88 (10)	632	2
Botswana	1,308 (242)	3 (1)	136	2
Eswatini	3,894 (585)	73 (12)	2,371	3
Lesotho	946 (165)	30 (6)	423	2
Malawi	5,125 (451)	162 (16)	2,690	3
Mozambique	2,914 (503)	19 (3)	1,196	3
Namibia	4,344 (1,243)	36 (17)	2,379	2
South Africa	589,886 (26,288)	11,982 (1,361)	477,671	3
Zambia	9,839 (1,629)	264 (23)	8,575	3
Zimbabwe	5,308 (560)	135 (31)	3,848	2
<b>Western Region</b>	<b>148,826 (7,457)</b>	<b>2,231 (132)</b>	<b>119,357</b>	
Benin	2,063 (149)	39 (1)	1,690	3
Burkina Faso	1,280 (69)	55 (1)	1,018	3
Cape Verde	3,203 (320)	36 (4)	2,336	2
Côte d'Ivoire	17,102 (304)	110 (5)	13,990	3
Gambia	1,872 (637)	63 (40)	401	1
Ghana	42,653 (1,441)	239 (24)	40,567	3
Guinea	8,620 (690)	51 (1)	7,472	3
Guinea-Bissau	2,117 (65)	33 (4)	1,089	3
Liberia	1,277 (37)	82 (3)	803	3

Mali	2,640 (67)	125 (0)	1,987	3
Niger	1,167 (9)	69 (0)	1,078	3
Nigeria	49,485 (2,618)	977 (27)	36,834	3
Senegal	12,237 (925)	256 (20)	7,728	3
Sierra Leone	1,956 (39)	69 (0)	1,506	3
Togo	1,154 (87)	27 (2)	858	3
<b>Total</b>	<b>1,128,245 (72,281)</b>	<b>25,884 (2,302)</b>	<b>846,330</b>	

Figure 1: New COVID-19 cases reported by day and AU region, 15 February - 18 August 2020



## **NEW Africa CDC Response Activities:**

### **General:**

1. Africa CDC held a special webinar on Africa Against COVID-19 pandemic; “Saving lives, saving economies and livelihoods campaign” on 13th August 2020, 3.00-4.10 PM EAT. Link: <http://bit.ly/31wm4rO>
2. Africa CDC and the African Risk Capacity (ARC) launched two COVID-19 modelling tools for Africa: 1) The COVID-19 Potential Outcomes Scenarios tool and 2) The COVID-19 Spread Simulation Tool for Africa. These tools will help African Union Member States evaluate the potential magnitude of COVID-19 for their countries and aid them in making appropriate responses decisions to mitigate pandemic risks. Link: <https://www.africanriskcapacity.org/product/outbreaks-and-epidemics/>
3. Africa CDC deployed response staff to Burundi (10 experts), Namibia (5 epidemiologists), and Zimbabwe (10 experts).
4. The Partnership for Evidence-Based Response to COVID-19 (PERC) released the latest bi-weekly report on 14 August 2020. Link: <https://preventepidemics.org/covid19/perc/>

## **Healthcare Preparedness and Medical Countermeasures:**

### *Case Management*

1. Africa CDC held its 22nd Clinical-Community of Practice webinar on Thursday, 13th August 2020, 1pm EAT. Link: <http://bit.ly/2WTP9Lp>
2. Africa CDC held a third collaborative meeting with project Health Oriented Preventive Education (HOPE) to train Arabic speaking Member States in case management.

### *Infection Prevention and Control*

1. Africa CDC held an Infection Prevention and Control (IPC) webinar series titled “Update on the transmission and clinical ventilation-droplet and airborne” on Wednesday 12 August 2020 for English and Friday 14 August 2020 for French sessions. Link: <https://t.co/JLubxbXyrP?amp=1>

### **Laboratory:**

1. Africa CDC held its weekly webinar series titled “Optimized diagnostic networks key to responding to COVID-19 - Doing more with less confirmation ” on Thursday 13 August 2020 at 4pm EAT.

### **Risk Communication:**

1. Africa CDC held its regular weekly press briefings to update the public on the trend of COVID-19 on the continent, Africa CDC response activities and provide clarifications to journalists and relevant stakeholders on Thursday 13 August 2020

at 11:00 AM EAT. The guest for the week was Dr Ilesh Jani, Director of the Mozambique Institute of Health.

2. Africa CDC held a meeting with Southern Africa HIV and AIDS Information Dissemination Service (SAfAIDS) to discuss preparations for a community engagement activity using champions.
3. Africa CDC Held a meeting with the Deutsche Gesellschaft für Internationale Zusammenarbeit (GIZ) on implementation of the Viamo mobile app for COVID-19 campaign and the use of radio programmes.
4. Africa CDC held a meeting on the Pathogen Genomic Institute programme with the Bill Gates Foundation team.
5. Africa CDC held a meeting with Pandemic Action Network to discuss more areas of partnership with Africa CDC.
6. Participated in the World Mask Week by posting visuals designed by Africa CDC on social media platforms.

#### **Surveillance:**

1. Held its 16th surveillance webinar titled “Resumption of travel and reopening of borders: Implication for ground crossings and inland ports” on Wednesday 12 August 2020 at 4pm EAT. Link: <https://t.co/LIKIweyc6v?amp=1>
2. Africa CDC published a “Generic protocol for population-based sero-survey studies” last week. The document is available at the following link: <https://africacdc.org/download/generic-protocol-for-a-population-based-age-and-gender-stratified-sero-survey-study-for-sars-cov-2/>

#### **Sciences, standards and regulations:**

1. Access the biweekly COVID-19 Scientific and Public Health Policy Update at: <https://africacdc.org/covid-19/> or at the WHO AFRO link: [https://afrolib.afro.who.int/pmb/opac\\_css/doc\\_num.php?explnum\\_id=7728](https://afrolib.afro.who.int/pmb/opac_css/doc_num.php?explnum_id=7728)
2. Africa CDC published a “Guidance on Resumption of Travel and Cross-border Surveillance” last week. The document is available at the following link: <https://africacdc.org/download/guidance-on-resumption-of-travel-and-cross-border-surveillance/>

### Recommendations for Member States:

1. All Member States should continue to enhance their surveillance<sup>6</sup> to include COVID-19<sup>7</sup> and severe acute respiratory infections (SARI)<sup>8</sup>. Examples of enhanced surveillance include:
  - a. Adding questions about travel, contact history, and testing for coronaviruses to existing influenza surveillance systems;
  - b. Notifying healthcare facilities to immediately inform local public health officials about persons who meet the case definition for COVID-19, SARI and/or have recent travel to a country with local transmission or history of contact with a case.
2. Member States should perform contact tracing of confirmed cases based on transmission type and country capacity.<sup>9</sup>
3. Member states should notify and routinely share with WHO and Africa CDC data regarding suspected or confirmed COVID-19 cases, deaths, recoveries, tests conducted and healthcare workers infected to continually inform these and other updates. Notify Africa CDC by emailing: [AfricaCDCEBS@africa-union.org](mailto:AfricaCDCEBS@africa-union.org).
4. Member states should continue to provide guidance to the general public about seeking immediate medical care and informing healthcare providers about recent travel or contact history in anyone who develops symptoms of severe respiratory illness.

### Resources for more information:

#### *Africa CDC Resources*

- Africa CDC COVID-19 updates: <https://africacdc.org/covid-19/>
- Multimedia: <https://africacdc.org/covid-19-multimedia/>
- Resources, policy guidelines, and infographics: <https://africacdc.org/covid-19/covid-19-resources/>

#### *Other Resources*

- European Centre for Disease Prevention and Control. <https://www.ecdc.europa.eu/en/novel-coronavirus-china>
- US Centers for Disease Control and Prevention. Coronavirus disease 2019 (COVID-19). <https://www.cdc.gov/coronavirus/novel-coronavirus-2019.html>
- WHO. Technical Guidance. <https://www.who.int/emergencies/diseases/novel-coronavirus-2019/technical-guidance>

<sup>6</sup>Africa CDC Protocol for enhanced surveillance for COVID-19 in Africa: <https://africacdc.org/download/protocol-for-enhanced-severe-acute-respiratory-illness-and-influenza-like-illness-surveillance-for-covid-19-in-africa/>

<sup>7</sup>WHO COVID-19 surveillance guidance and case definition: <https://www.who.int/emergencies/diseases/novel-coronavirus-2019/technical-guidance/surveillance-and-case-definitions>

<sup>8</sup>WHO SARI case definition: anyone with an acute respiratory infection with a history of fever (or measured fever of  $\geq 38\text{ }^{\circ}\text{C}$ ) and cough with symptom onset within the last 10 days that requires hospitalization.

[https://www.who.int/influenza/surveillance\\_monitoring/ili\\_sari\\_surveillance\\_case\\_definition/en/](https://www.who.int/influenza/surveillance_monitoring/ili_sari_surveillance_case_definition/en/)

<sup>9</sup>Africa CDC Guidance on Contact Tracing for COVID-19 Pandemic: <https://africacdc.org/download/guidance-on-contact-tracing-for-covid-19-pandemic/>